

STATE OF KANSAS)
COUNTY OF McPHERSON) SS

BE IT KNOWN, That the City of McPherson approved and accepted attached plat this 31 day of Sept, 1968.

Governing body of the City of McPherson, Kansas

Charles E. Stacey
Mayor
City of McPherson, Kansas

STATE OF KANSAS)
COUNTY OF McPHERSON) SS

BE IT KNOWN, That the attached plat was submitted to me and that the same is hereby approved this 19 day of Sept, 1968.

Gen. M. G. ...
City of McPherson, Kansas

STATE OF KANSAS)
COUNTY OF McPHERSON) SS

BE IT KNOWN, That the attached plat was submitted to me and that the same is hereby approved this 19 day of Sept, 1968.

Charles E. Stacey
City of McPherson, Kansas

STATE OF KANSAS)
COUNTY OF McPHERSON) SS

BE IT KNOWN, That the attached plat was submitted to me and that the same is hereby approved this 19 day of Sept, 1968.

Robert J. Stone
City of McPherson, Kansas

STATE OF KANSAS)
COUNTY OF McPHERSON) SS

BE IT KNOWN, That the attached plat was submitted to me and that the same is hereby approved this 10 day of Sept, 1968.

Robert J. Stone
City of McPherson, Kansas

STATE OF KANSAS)
COUNTY OF McPHERSON) SS

BE IT KNOWN, That the attached plat was submitted to me and that the same is hereby approved this 11 day of September, 1968.

Robert J. Stone
City of McPherson, Kansas

STATE OF KANSAS)
COUNTY OF McPHERSON) SS

BE IT KNOWN, That the attached plat was submitted to the City Planning Commission of the City of McPherson, Kansas, and was by it approved on this 20 day of Sept, 1968.

W. J. ...
City of McPherson, Kansas

STATE OF KANSAS)
COUNTY OF McPHERSON) SS

I, Lynn Peterson, the duly appointed, qualified and now City Clerk of the City of McPherson, Kansas, do hereby certify that the Planning Commission of the City of McPherson, Kansas, recommended approval of the accompanying plat to the Board of Commissioners of the City of McPherson, Kansas, and that said Board adopted said recommendation, approved said plat, and incorporated said approval in their minutes of the 19 day of Sept, 1968, all of which is on file in my office.

IN WITNESS WHEREOF, I have subscribed my name and affixed the seal of said City this 19 day of Sept, 1968.

Lynn Peterson
City Clerk
City of McPherson, Kansas

STATE OF KANSAS)
COUNTY OF McPHERSON) SS

BE IT KNOWN, That the attached plat was submitted to the Zoning Board of McPherson County, Kansas, and was by it approved on the 25 day of Sept, 1968.

Charles E. Stacey
Chairman, Zoning Board,
County of McPherson, Kansas

STATE OF KANSAS)
COUNTY OF McPHERSON) SS

I, Hilbert Johnson, the duly elected, qualified and now acting County Clerk of McPherson County, Kansas, do hereby certify that the Zoning Board of McPherson County, Kansas, recommended approval of the accompanying plat to the Board of Commissioners of McPherson County, Kansas and that said Board adopted said recommendation, approved said plat, and incorporated said approval in their minutes on the 25 day of Sept, 1968, all of which is on file in my office.

IN WITNESS WHEREOF, I have subscribed my name and affixed the seal of said County this 20 day of Sept, 1968.

Hilbert Johnson
County Clerk
McPherson County, Kansas

STATE OF KANSAS)
COUNTY OF McPHERSON) SS

SURVEYORS CERTIFICATE AND DESCRIPTION

I, Charles E. Stacey, a Licensed Professional Engineer of the State of Kansas, certify that I have surveyed, or caused a survey to be made under my supervision, of the attached Plat and described as follows: A tract of land in the Southeast Quarter of the Southeast Quarter (SE/4 SE/4) of Section Seventeen (17), Township Sixteen (16) South, Range Three (3) West of the 6th P.M., beginning at a point on the section line 442 feet West of the Northeast corner common to Sections 16, 17, 20, and 21, thence North 170 feet then a deflection angle of 30 degrees, thence West 29 feet, thence North 122.6 feet more or less to a line 600 feet North and Parallel to the South Section Line, thence West 166 feet, thence Southwesterly 118.8 feet at a deflection angle of 89 degrees and 10 minutes, thence West 480 feet more or less to the point of beginning, said tract of land contains 8.6 acres, more or less, including that part now used for highway purposes.

Given under my hand and seal at McPherson, McPherson County, Kansas this 10 day of September, 1968.

Charles E. Stacey
Charles E. Stacey

DEDICATION

STATE OF KANSAS)
COUNTY OF McPHERSON) SS

KNOW ALL MEN BY THESE PRESENTS, That H. V. Tucker, owner and proprietor of the lands above described in the certificate of survey, have caused the said lands to be surveyed into lots and blocks, and under the name of McPherson Addition to be dedicated to the City of McPherson, Kansas, and the same to be subdivided into lots, blocks and public ways for the use and benefit of the public. The said Harry Spence Addition and the land contained therein, is held and shall be conveyed subject to the restrictions and reservations and covenants on file in the office of the Register of Deeds of McPherson County, Kansas.

Deed at McPherson, Kansas Sept 10, 1968.

Signed

H. V. Tucker
H. V. Tucker

STATE OF KANSAS)
COUNTY OF McPHERSON) SS

Be it remembered that on this 10 day of Sept, 1968 before me the undersigned, a notary public, duly commissioned in and for the county and state aforesaid came H. V. Tucker, personally known to me to be the same person as H. V. Tucker, who executed the foregoing instrument, and who duly acknowledged the execution of the same.

IN WITNESS WHEREOF, I have hereunto set my official signature and affixed my notarial seal the day and year first above written.

Richard ...
Notary Public

My Commission expires May 31, 1972.

STATE OF KANSAS)
COUNTY OF McPHERSON) SS

BE IT KNOWN, That the attached plat was submitted to the City Planning Commission of the City of McPherson, Kansas, and was by it approved on this 20 day of Sept, 1968.

W. J. ...
City of McPherson, Kansas

STATE OF KANSAS)
COUNTY OF McPHERSON) SS

I, Lynn Peterson, the duly appointed, qualified and now City Clerk of the City of McPherson, Kansas, do hereby certify that the Planning Commission of the City of McPherson, Kansas, recommended approval of the accompanying plat to the Board of Commissioners of the City of McPherson, Kansas, and that said Board adopted said recommendation, approved said plat, and incorporated said approval in their minutes of the 19 day of Sept, 1968, all of which is on file in my office.

IN WITNESS WHEREOF, I have subscribed my name and affixed the seal of said City this 19 day of Sept, 1968.

Lynn Peterson
City Clerk
City of McPherson, Kansas

STATE OF KANSAS)
COUNTY OF McPHERSON) SS

BE IT KNOWN, That the attached plat was submitted to the Zoning Board of McPherson County, Kansas, and was by it approved on the 25 day of Sept, 1968.

Charles E. Stacey
Chairman, Zoning Board,
County of McPherson, Kansas

STATE OF KANSAS)
COUNTY OF McPHERSON) SS

I, Hilbert Johnson, the duly elected, qualified and now acting County Clerk of McPherson County, Kansas, do hereby certify that the Zoning Board of McPherson County, Kansas, recommended approval of the accompanying plat to the Board of Commissioners of McPherson County, Kansas and that said Board adopted said recommendation, approved said plat, and incorporated said approval in their minutes on the 25 day of Sept, 1968, all of which is on file in my office.

IN WITNESS WHEREOF, I have subscribed my name and affixed the seal of said County this 20 day of Sept, 1968.

Hilbert Johnson
County Clerk
McPherson County, Kansas

STATE OF KANSAS)
COUNTY OF McPHERSON) SS

BE IT KNOWN, That the City of McPherson approved and accepted attached plat this 31 day of Sept, 1968.

Governing body of the City of McPherson, Kansas

Charles E. Stacey
Mayor
City of McPherson, Kansas

STATE OF KANSAS)
COUNTY OF McPHERSON) SS

BE IT KNOWN, That the attached plat was submitted to me and that the same is hereby approved this 19 day of Sept, 1968.

Gen. M. G. ...
City of McPherson, Kansas

STATE OF KANSAS)
COUNTY OF McPHERSON) SS

BE IT KNOWN, That the attached plat was submitted to me and that the same is hereby approved this 19 day of Sept, 1968.

Charles E. Stacey
City of McPherson, Kansas

STATE OF KANSAS)
COUNTY OF McPHERSON) SS

BE IT KNOWN, That the attached plat was submitted to me and that the same is hereby approved this 19 day of Sept, 1968.

Robert J. Stone
City of McPherson, Kansas

STATE OF KANSAS)
COUNTY OF McPHERSON) SS

BE IT KNOWN, That the attached plat was submitted to me and that the same is hereby approved this 10 day of Sept, 1968.

Robert J. Stone
City of McPherson, Kansas

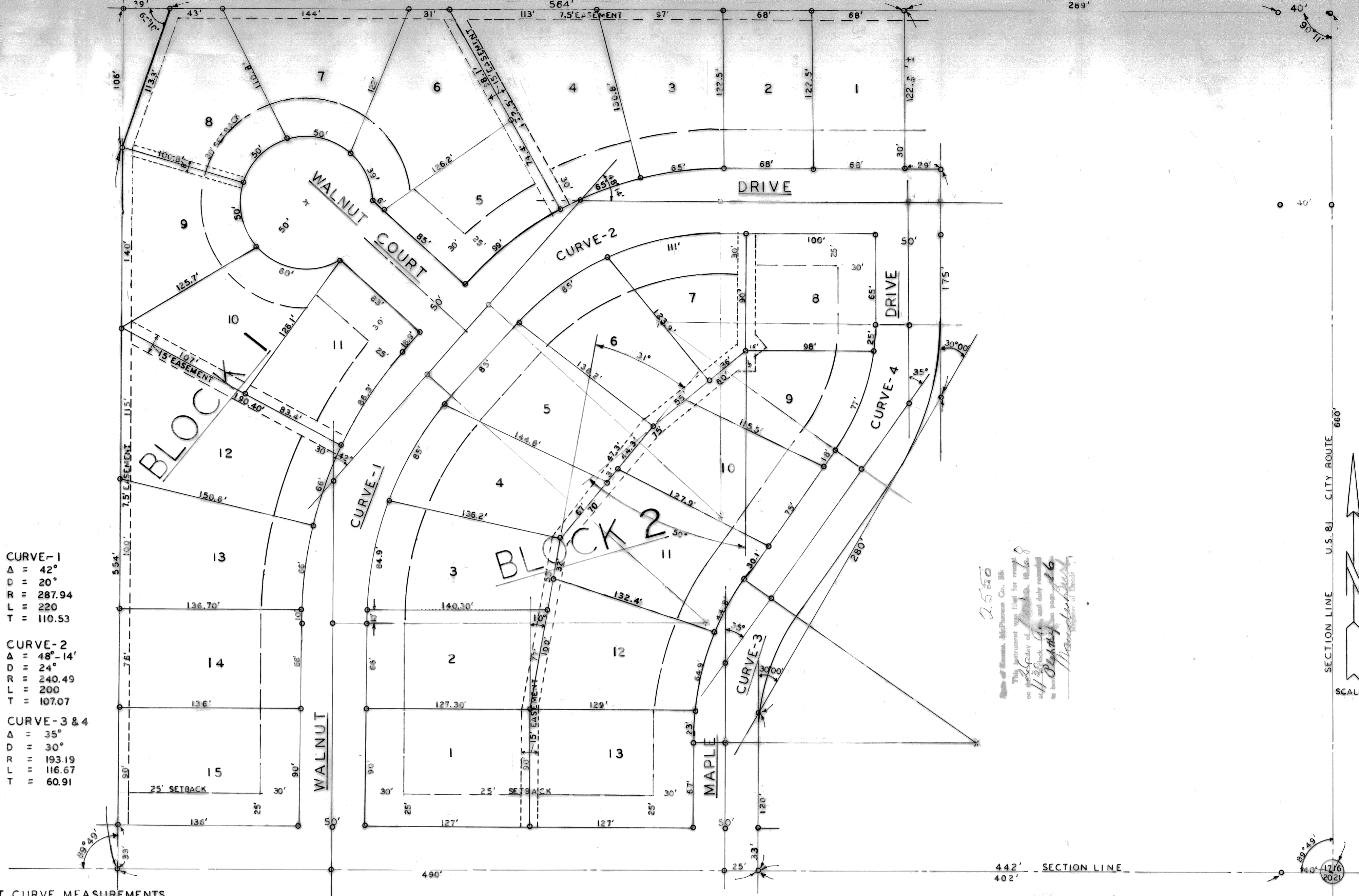
STATE OF KANSAS)
COUNTY OF McPHERSON) SS

BE IT KNOWN, That the attached plat was submitted to me and that the same is hereby approved this 11 day of September, 1968.

Robert J. Stone
City of McPherson, Kansas

CURVE-1	Δ = 42°
	D = 20'
	R = 287.94
	L = 220
	T = 110.53
CURVE-2	Δ = 48°-14'
	D = 24'
	R = 240.49
	L = 200
	T = 107.07
CURVE-3 & 4	Δ = 35°
	D = 30'
	R = 193.19
	L = 116.67
	T = 60.91

LOT CURVE MEASUREMENTS
ARE SHOWN AS CHORD DISTANCES



HARRY SPENCE ADDITION

2550
The instrument was filed for record on the 25th day of Sept, 1968, at 11:30 a.m. and duly recorded in the public records of McPherson County, Kansas, on page 16 of the 1968 volume of the same.

SECTION LINE U.S. 81 CITY ROUTE 660
SCALE 1" = 50'